

F Care

- F 1. The entire fall arrester is to be washed with water and dried using an absorbent cloth. Do not clean it with trichloroethane containing quick-cleaning agents, thinning agents or cold-cleaning agents. Do not use grease.
- F 2. Rollers (fig. 6 detail 1.3) are equipped with friction bearings and are greased in the factory.
- F 3. Swivelling shackles (fig. 6 detail 3.0) are to be lubricated slightly.
- F 4. Oil the knurled sleeve (fig. 6 detail 4.1) if required.
- F 5. **Attention!**
Do not expose the fall arrester to chemicals.

G Storage

When storing the fall arrester, it must be clean, as dry as possible and free from dust. It must not be stored in the direct proximity of heat sources.

Instruction for use and maintenance of sliding type fall arrester type Comfort² for use in Söll GlideLoc™ fall arrest systems in accordance with EN 353-1

"Comfort²"

Part no. 23331

with EN 353 Teil 1

Serial number: _____

Date of manufacture: _____

(The following must be completed by the operator in permanent waterproof ink.)

Date of initial operation: _____

Operator/user: _____

Street: _____

Place: _____

Tel: _____ Fax: _____

Version: 27.08.2003

Technical specifications are subject to change without notice.

Christian Dalloz Holding Deutschland GmbH & Co. KG, Seligenweg 10, D-95028 Hof

Table of Content

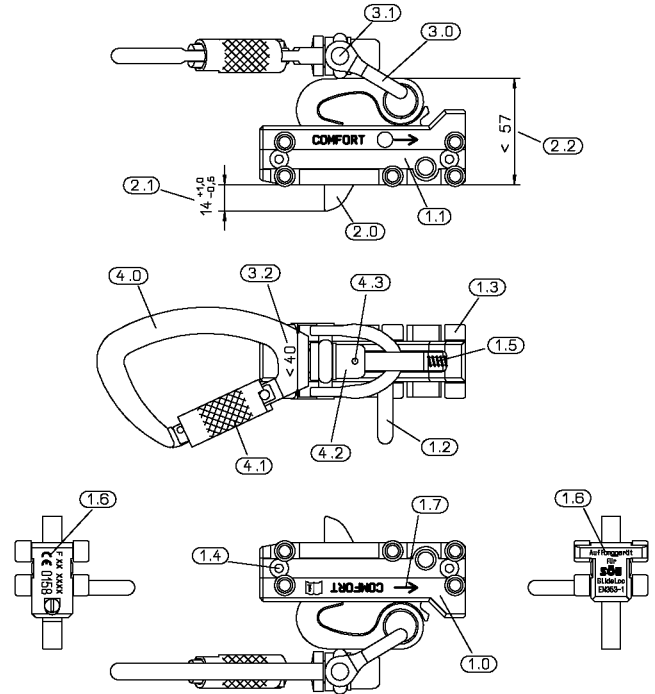
	Page
A General	3
B Inspection Before Climbing	4
C Insertion and Use of the Fall Arrester	5
D Removal of the Fall Arrester from Guide Rail	9
E Maintenance	9
F Care	16
G Storage	16

These instructions are protected by copyright!

They may not be reproduced and distributed in any ways/ by any means without prior written consent of the author according to Articles 16 and 17 of the German Copyright Act.

Christian Dalloz Holding Deutschland GmbH & Co. KG will prosecute any violations against this under Article 106 of the German Copyright Act.

Fig. 6



Item 6										
carabiner (4.0)										
carabiner (4.0) is not bent										
carabiner (4.0) is not cracked										
carabiner (4.0) is not broken										
Special nut (4.2) is not damaged										
Locking pin (4.3) is present										
knurled ferrule (4.1) is not deformed										
knurled ferrule (4.1) may be easily twisted										
knurled ferrule (4.1) closes and locks automatically after releasing										
Further remarks										

A General

- A 1. Anyone working with or on SÖLL fall protection systems must be familiarized with these instructions prior to using the system. Use which is not in accordance with these instructions constitutes a risk to human life.
- A 2. The operator of the fall protection system as well as the user of the fall arrester must properly ensure that this manual is always stored in a dry place together with the appropriate fall arrester and is available for consultation at all times.
- A 3. If requested, the user must present this manual to the manufacturer of the fall protection system (Christian Dalloz Holding Deutschland GmbH & Co. KG or a dealer authorized by the same). **When the fall arrester is sent to the manufacturer, this manual must be enclosed.**
- A 4. The national safety regulations must be followed.
- A 5. The fall arrester „Comfort 2nd“ is part of the SÖLL fall protection system on a rigid anchorage line Type Söll GlideLoc™ in accordance with EN 353/part 1. **It is designed and may be used as personal protective equipment only.** It must not be used for different applications, eg. as load carrier for material or as load arrester! The operator of the fall protection system must properly ensure that the fall arrester belongs to the user in person and is used by him in accordance with these instructions. After use, the fall arrester must not be left connected to the fall protection system.

Year	1	2	3	4	5
Date					
Competent person					
Signature					
Item 1					
Body (1.0)					
free of paint, mortar, concrete, dirt etc.					
The labelling (1.6) on the front sides is well legible.					
safety pin (1.2) sits firmly and is not bent (check by turning)					
sliding surfaces (1.1) are clean					
Sliding blocks (1.4) are present					
Sliding blocks (1.4) not worn					
The two engraved arrows (1.7) are in evidence					
Item 2					
Brake cam (2.0)					
Length of arresting catch (2.1) 14,0 mm + 1,0/- 0,5 mm					
brake cam (2.0) moves easily					
Arresting catch is not deformed (2.2) max. 57 mm					

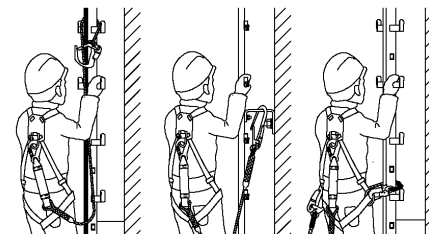
C Insertion and Use of the Fall Arrester

Fig.1

Warning

- C 1. The fall arrester, properly used in connection with a full body harness, protects its user during ascent and descent against falls. When working in or along the climbing path, the climber shall always use an additional EN 354 safety lanyard or an EN 358 pole strap to secure himself. The lanyards shall be attached to attachment points (e.g. a ladder mounting bracket) of sufficient strength to withstand the impact of a fall. This requirement also applies for persons stopping at a rest platform. The lanyards shall always be kept as short as possible to minimize the risks of a fall. (see fig. 1)

Fig. 1



EN 354/355

EN 358

A fall arrester according to EN 353-1 shall be used only by persons who:

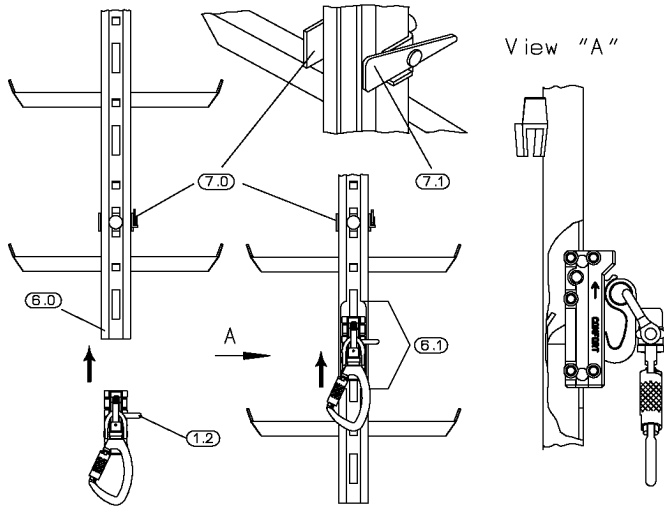
- have been trained or are otherwise competent
- are supervised directly by a trained or competent person.

Fig. 2

- C 2. Insert the fall arrester correctly in the lower end of the rail (6.0) or in the sparing (6.1) which must always be at the height of the waist or lower (see view "A"). The locking pin (1.2) protruding from the side must be on the right, the two engraved arrows (Fig. 6/detail 1.7) on the side of the fall arrester must show to the top.

Together with the end stop (7.0), the safety pin (1.2) prevents the fall arrester from being inserted incorrectly and from accidentally sliding out of the rail.

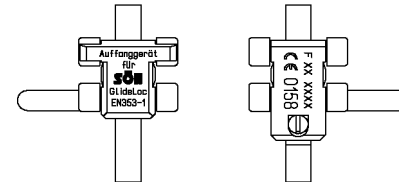
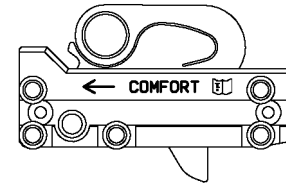
Fig. 2

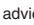


For reasons of safety, repairs may only be carried out by the manufacturer.

Fig. 5
Example for marking and labelling:

Fig. 5



- construction year - FXX
- serial number - XXXX
- CE 0158 - monitoring testing institute
-  - advice to read the maintenance check list
- Söll GlideLoc - type denomination of the guided type fall arrester
- EN 353-1 - reference to the European standard

After a completed service inspection (no defects remaining) the fall arrester may be equipped with the approval label (showing when next inspection at the latest shall take place).

- E 2. Depending on use requirements and operational conditions, the fall arrester must be inspected by a competent person for unimpaired condition to ensure it is in perfect working condition as required, but at least once a year. For reasons of safety the fall arrester may only be repaired by the manufacturer.

A competent person is:

One who is knowledgeable of manufacturer's recommendations and instructions on manufactured components and is capable of identifying existing and predictable hazards in any component of a personal fall protection system and related equipment used in the work environment and who has authorization to take prompt corrective measures to eliminate or control the hazards. He must be familiar with the relevant guidelines, national and international safety regulations and generally acknowledged rules of safety technology (e.g., EN standards).

- E 3. **Maintenance checklist** (see fig. 6)

The checklist must be completed by a competent person using permanent waterproof ink and must be signed by that person. The individual items to be checked must be marked with "OK" or "F" (faulty). The competent person shall be responsible for the correct nature of the information. If an "F" has been noted in the remarks, this fault can be corrected and taken away only by the competent person, that is when it concerns removal of dirt (colour, mortar, concrete) on bodies and contact areas and also when it concerns clearing of text. This procedure shall be noted in the "Remarks" with date and signature of the competent person.

If there is dirt on the inside parts of the fall arrester or if there are defects which involve dismantling, the fall arrester must be sent to the manufacturer (together with the instructions) for inspection, repair and approval.

- Fig. 3**
C 3. Open the carabiner hook (4.0) on the fall arrester. The knurled ferrule (4.1.) must be **twisted backwards and pushed towards inside**. Insert directly in the eyelet of the full body harness and release the knurled sleeve. It must automatically close and lock.

Attention!

An unlocked carabiner hook (open knurled sleeve) presents a danger to life.

Fig. 3

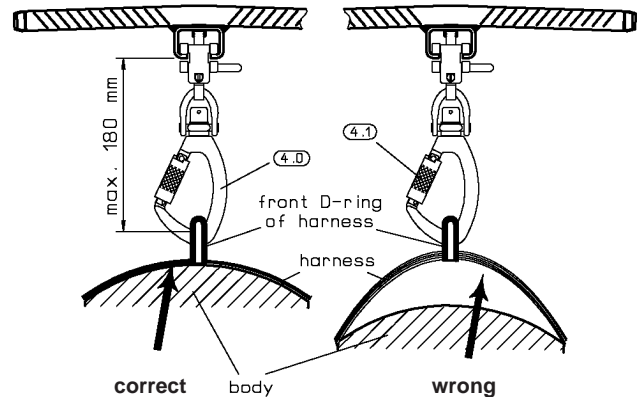
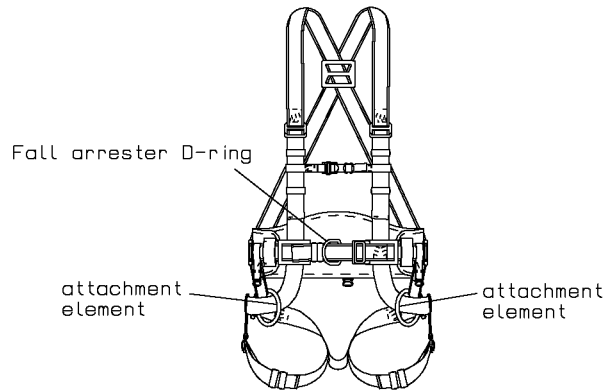


Fig. 4

Warning - risk for fatal injury!

The karabiner of the Comfort fall arrester must only be attached **directly** to the frontal D-ring of the user's harness. This requirement applies to vertical as well as horizontal use in EN 353-1 systems. The length of the connector (distance between the front face of the rail and the attachment D-ring of the users harness) must not exceed 180. (see fig. 3)

Fig. 4



C 4. The abdominal or thoracic strap of the full body harness must fit the body tightly (see fig. 3).

- C 5. It is now possible to climb the ladder. For descend, the arresting catch (fig. 6 detail 2.0) of the fall arrester must be unlocked. There are two ways of doing this:
- Lean back and thereby unlock the arresting catch
 - You are in the vicinity of the ladder and the fall arrester is hanging down. The weight of the fall arrester will unlock the arresting catch.

D Removal of the Fall Arrester from Guide Rail

Warning:

Before removing the fall arrester from the guide-rail or before disconnecting from the fall arrester at a height, protection against falls from a height must be provided by other means.

- D 1. To remove the fall arrester from the anchorage rail, the end stop (fig. 2 detail 7.0) must be passed. This is done by lifting or lowering the pivotable safety gate (fig. 2 detail 7.1) of the end stop. In case an exit device is used, the relevant instructions must be followed.

E Maintenance

- E 1. A fall arrester which has arrested a person's fall from a height must not be used again until a competent person has agreed on its further use. If no competent person is available, the fall arrester must be returned to the manufacturer or authorized dealer for inspection **together with these instructions.**