

# Assembly, Installation and Operating Instructions for the anchor device according to EN 795 „Söll-T-Anchor“

Part no: 24787, 24788

Serial number: \_\_\_\_\_

Date of manufacture: \_\_\_\_\_

(The following must be completed by the operator in permanent waterproof ink.)

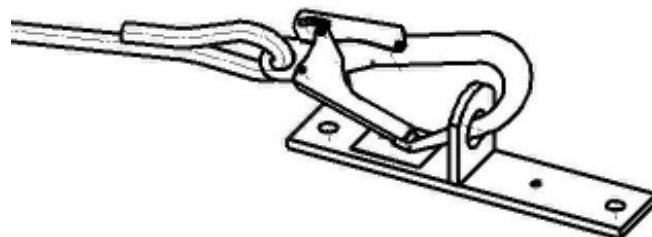
Date of initial operation: \_\_\_\_\_

Operator/user: \_\_\_\_\_

Street: \_\_\_\_\_

Place: \_\_\_\_\_

Tel: \_\_\_\_\_ Fax: \_\_\_\_\_



Issue: 25.08.2009

SE 69




Technical modifications reserved!



# Contents

A Safety precautions	3
B Assembly/Installation	4
C Application	8
D Care and Maintenance	10
E Checklist	13

## Explanation of symbols

	<p><b>Danger !</b></p> <p>Improper or careless handling could cause accidents leading to falls or even death.</p>
	<p><b>Warning !</b></p> <p>Non-observance could result in serious injury.</p>
	<p><b>Important !</b></p> <p>Useful information and user tips are given here.</p>

## General information

These installation instructions and directions for use refer to those parts of the product that are relevant to safety. The product actually delivered may differ from the version described and illustrated here due to the addition of accessories (e.g. assembly, sealing and heat insulation accessories).

**These instructions are protected by copyright!**

They may not be reproduced and distributed in any ways/  
by any means without prior written consent of the author  
according to Articles 16 and 17 of the German Copyright Act.  
SPERIAN FALL PROTECTION Deutschland GmbH & Co. KG will  
prosecute any violations against this  
under Article 106 of the German Copyright Act.

**Notice!**

**In this issue the following has been changed:** logotype

# A Safety precautions

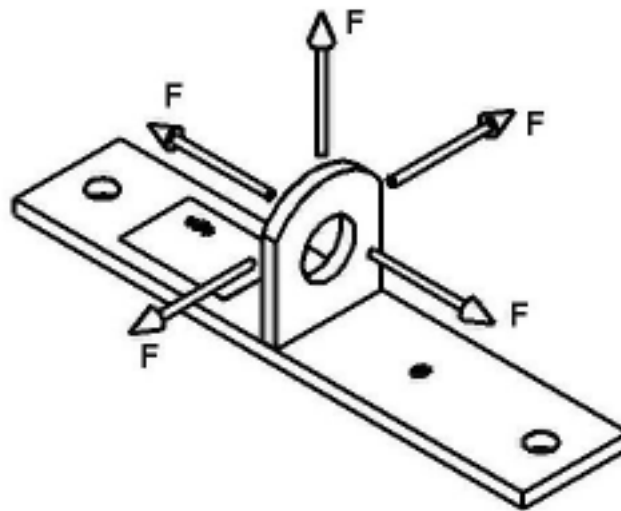
- A 1. These instructions must be brought to the attention of any employee using the Söll „T-Anchor“ anchorage device for personal protection before he begins to use the device. Action contravening these instructions put people’s lives at risk! Operatives must be given training covering these instructions and the user information before starting work and at regular intervals thereafter, but at least once a year.
- A 2. The owner of the anchorage device must ensure that this instruction
- either is kept easily available and well preserved at place of installation
  - or that the system owner keeps the instructions at a location well known and always easily available to a user of the system.
- A 3. The operator must be able to present these instructions at the request of the manufacturer (SPERIAN FALL PROTECTION Deutschland GmbH & Co. KG or one of its authorised dealers).
- A 4. If other personal protective equipment is used to provide protection against falls or as restraining or rescue devices and this equipment is linked or fitted to the Söll „T-Anchor“ anchorage device, it is essential that the relevant operating instructions issued by the operative’s employer and the directions for use and user information provided by the relevant manufacturer are observed.
- A 5. Precautions for suitable rescue action must be taken before and during operations in areas presenting a risk of falls.
- A 6. The Söll „T-Anchor“ anchorage device must only be used for the intended purpose, and not for instance as a transport anchor or for slinging loads.
- A 7. The site manager of the assembly firm must fill in the checklist (Section E) clearly and correctly using a permanent marker pen.
- A 9. The system has been certified by EC-type test: DEKRA EXAM GmbH, Dinnendahlstraße 9, 44809 Bochum, CE 0158.
- A10. User must be in good health condition and not intoxicated by alcohol, drugs or medicines when using T-Anchor.
- A 11. T-Anchor must only be used in combination with full body harnesses approved according to EN 361.
- A 12. T-Anchor may only be install on the building or structure which are able to take up the characteristic load of 6 kN for one user and 7 kN for 2 users.
- A 13 T-Anchor shall depending on use conditions be inspected at least once per year by an competent person.

## B Assembly/Installation

**Fig. B 1**

B 1. Impact force to the T-Anchor in case of a fall can be applied in each direction.

**Fig. B 1**



### B 2. Important !



Before installation, you must make sure that the element to which the Söll „T-Anchor“ is secured can withstand the stresses that can occur in the event of a fall (proof of stability). This must be documented in writing by a qualified engineer.

The cross-sections of the components as indicated in the product documentation are minimum values for introduction of the load and are not to be regarded as proof for the above purpose. Otherwise the generally recognised rules of the art apply.

**Fig. B 2****B 3. Installation on reinforced concrete (Fig. B2)**Component requirements:

The minimum quality of concrete and the minimum ceiling thickness **d** depend on the uses for which the fixings are permitted.

Other assembly accessories required:

The Söll T-Anchor must only be secured with **fixings generally approved by building authorities or meeting European technical standards** for reinforced concrete.

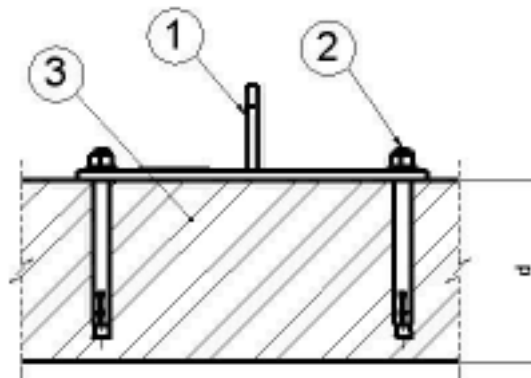
Recommended bolt diameter is 12 mm.

Assembly:

The fixings must be fitted in accordance with the manufacturer's instructions.

**Fig. B 2**

- 1 = T-Anchor
- 2 = Concrete bolt
- 3 = Reinforced concrete



**Fig. B 3**

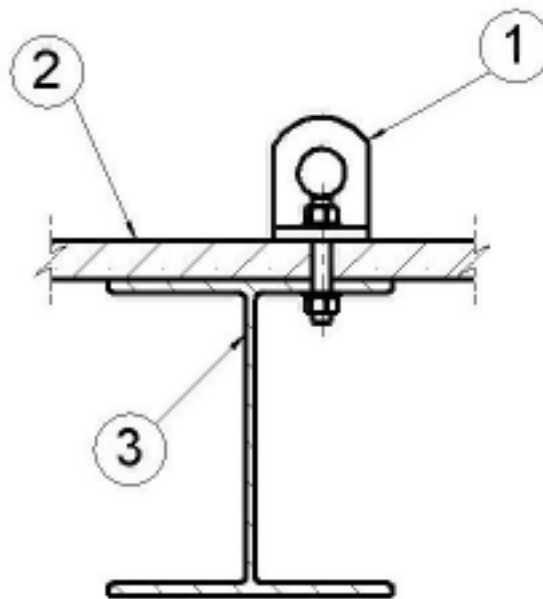
**B 4. Installation directly on steel girders or on a lightweight concrete ceiling and steel girders (Fig. B3)**

The Söll T-Anchor mounted straight on steel girder on its flange as shown the picture bellow or at any other steel construction as showing in Fig. B 3.1.

The Söll T-Anchor must only be secured with **fixings generally approved by building authorities or meeting European technical standards**. Recommended bolt diameter is 12mm.

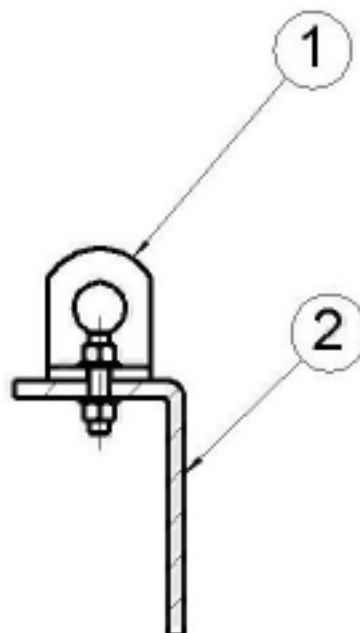
**Fig. B 3**

- 1 = T-Anchor
- 2 = Concrete ceiling
- 3 = Steel beam



**Fig. B 3.1**

- 1 = T-Anchor
- 2 = Steel construction



**Fig. B 4**

**B 5. Installation on wooden beams or on a wooden joist ceiling (Fig. B4)**

The Söll „T-Anchor“ is secured to the wooden beam by means of a mechanical wood fastener. Complying with wooden construction standard

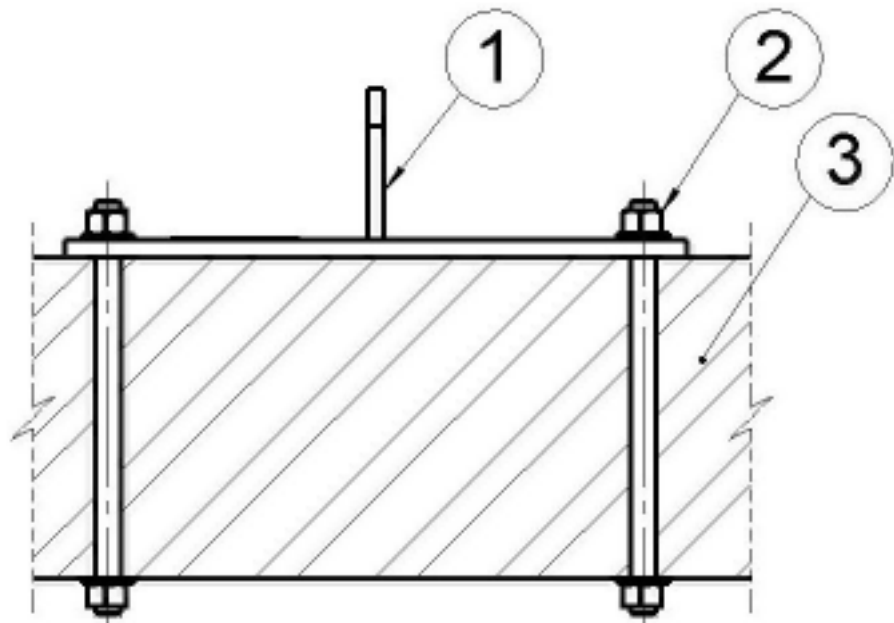
Two types of fixing methods:

1. T-Anchor secured by threaded rod with nuts and washers.
2. T-Anchor secured by wood screws.

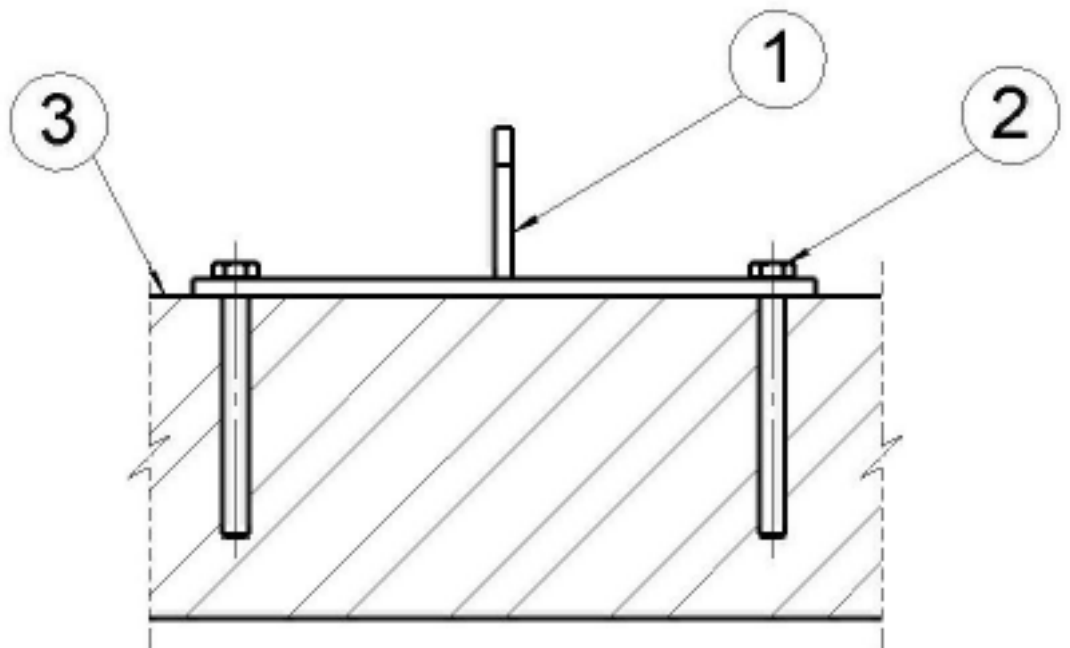
**Fixing method must be approved by building authorities.**

**Fig. B 4**

1 = T-Anchor  
2 = Threaded rod with nuts  
3 = Wooden beam



1 = T-Anchor  
2 = Wood screw  
3 = Wooden beam



## C Application

C 1. The „T-Anchor“ was designed as an anchorage point to protect maximum 2 people against fall

C 2. **The characteristic force introduced into the „ T-Anchor“ through these systems must not under any circumstances exceed 22.2 kN (5000 pound).**

C 3. If working in areas presenting a risk of falls, make sure that the operative is in a safe and stable position. Avoid anything in the access or working area that might cause stumbling.

C 4. A visual inspection for obvious defects and functional capacity must be carried out before and on each use of the device.

C 5. **Warning !**



You must stop using the anchorage device immediately if

- the lifting eye has been subjected to stress from a fall

In these cases the anchorage device must be inspected by an competent person and, where necessary, parts must be exchanged by an installation company approved by the manufacturer.

C 6. The Söll „T-Anchor“ may only be used in conjunction with the following safety accessories:

- For work presenting a risk of falls, EN 363-compliant fall arrester systems and EN 355-compliant shock absorbers;
- For workplace positioning, EN 358-compliant restraining systems;
- Rescue systems complying with EN 1496, 1497 and 1498.

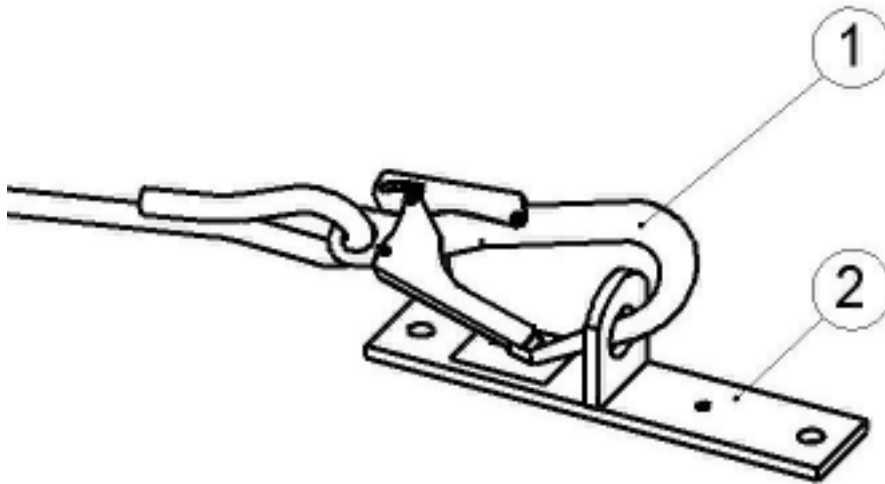
C 7. **Danger !**



The system of personal protective equipment providing protection against falls (only with shock absorbers), the restraining system or the rescue system that is chosen must be capable of preventing the operative from hitting the ground or colliding with other obstacles. Please refer also to the user information provided by the relevant manufacturer.

**Fig. C 1****C 8. Important !**

To protect against falls (**Fig. C1**), attach the snap hook of the lanyard (*Pos. 1*) to the colour-coded lifting eye (*Pos.2*) and lock it against inadvertent detaching.

**Fig. C 1****C 9. Danger !**

The snap hook of the lanyard (*Pos. 1*) must not be detached from the lifting eye (*Pos.2*) until the user is protected against falls by some other means.

## D Care and Maintenance

- D 1. For safety reasons do never repair components. Damaged components (e.g. after a fall) shall always be replaced.
- D 2. Only original spare parts or spare parts approved by the manufacturer may be used in repairs.
- D 3. The „T-Anchor“ must be inspected for perfect condition by an competent person as required according to the conditions of use and operational situation, but at least **once a year**.

D 4. **Warning!**

An anchorage device that is deficient or has been subjected to stress from a fall must not be used any longer. It may only be used again if an competent person has approved its further use.



**Competent person is a:**

person who thanks to his education and experience in the field of personal protective equipment against falls from height has sufficient knowledge about applicable state and local safety regulations, applicable standards (e.g. EN-standards) and is thus capable and thus authorized by Söll of judging the correct status and use of systems and products against falls from height.

### Fig. D 1

D 5. The identification plate (**Fig. D1**) is located at the base plate of T-Anchor and contains the following information:

- Manufacturer, supplier or importer of the anchorage device
- Type code: T-Anchor
- Serial number
- Year of manufacture
- Symbol and identification number of notified body certification by. DEKRA EXAM GmbH, CE 0158
- Standard for anchorage devices : EN 795: 1996
- Pictogram advising the operative to read the directions for use.
- Pictogram advising the operative to wear Fall protection equipment.
- Number of users
- Only use the T-Anchor with PPE EN 355 or 360

### Fig. D 1



### Attention!

There must always be an identification plate.



# E Check list for the inspection of Söll-anchorage device according to EN 795 Söll „T-Anchor“

Part No. 24787, 24788

The check list on pages 13 and 14 must be fully and correctly compiled by the chief engineer of the installing company by means of an indelible pen. He is responsible for the correctness of all the information provided therein. Check points which are characterized by defects or deviate from the description must be described in the list on page 14.

## Control Activity

## Remarks (please cross)

	yes	no
• All screwed connections are properly tightened	<input type="checkbox"/>	<input type="checkbox"/>
• Only anticorrosive bolt connections have been used.	<input type="checkbox"/>	<input type="checkbox"/>
• No deformation as described in Section D can be seen in the lifting eye.	<input type="checkbox"/>	<input type="checkbox"/>
• A Söll-system sign is posted.	<input type="checkbox"/>	<input type="checkbox"/>
• Static evidence for the fixing of the anchorage device is available.	<input type="checkbox"/>	<input type="checkbox"/>
• User test has taken place.	<input type="checkbox"/>	<input type="checkbox"/>
• This manual was handed over to the operator.	<input type="checkbox"/>	<input type="checkbox"/>
• Only original components from SPERIAN FALL PROTECTION Deutschland GmbH & Co. KG were used.	<input type="checkbox"/>	<input type="checkbox"/>

